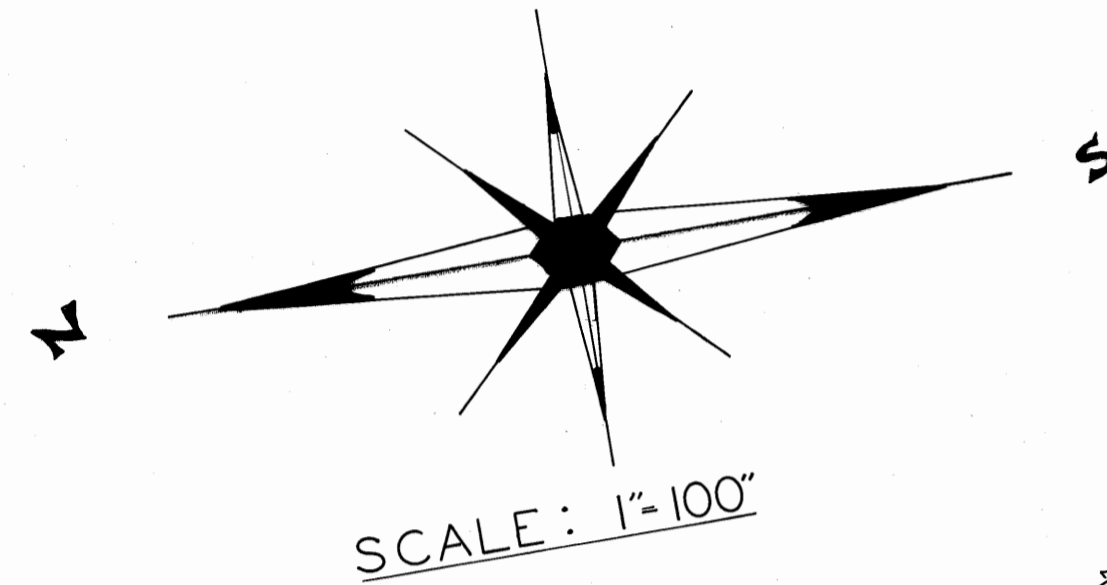
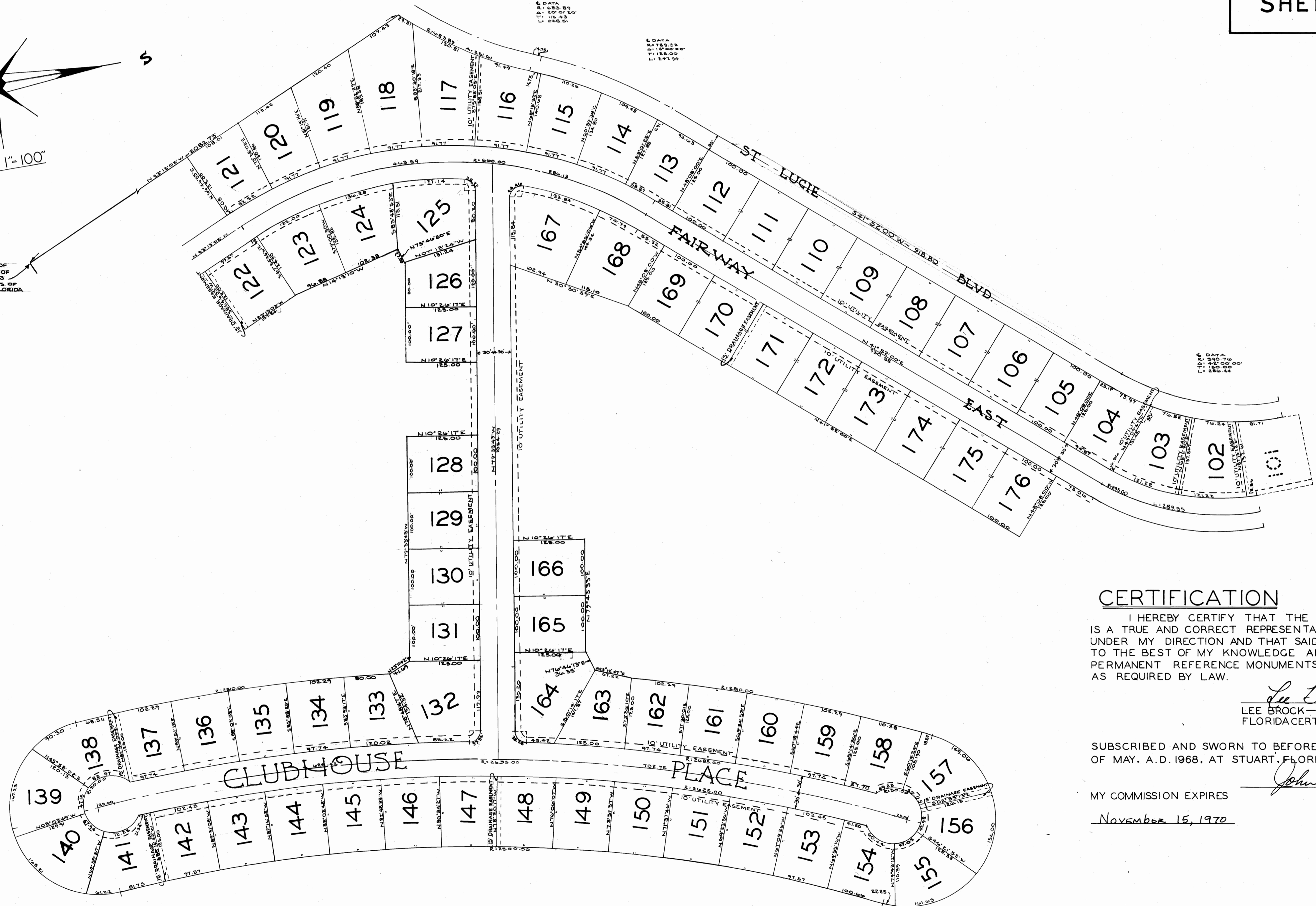


THE YACHT & COUNTRY CLUB OF STUART



NORTH EAST CORNER OF LOT 5, BLOCK 212, PLAT OF PORT SEWELL, PLAT BOOK 3, PAGE 8, PUBLIC RECORDS OF PALM BEACH COUNTY, FLORIDA



FILED FOR RECORD
MAY 26 1968
AUG 26 PM 2:02
DOROTHY PIERCE
CLERK OF CIRCUIT COURT
BY: _____ D.C.

I HEREBY CERTIFY THAT I HAVE EXAMINED THE ATTACHED PLAT AND FIND THAT IT COMPLIES IN FORM WITH CHAPTER 177 FLORIDA STATUTES AND FILED FOR RECORD THIS 26th DAY OF AUG. A.D. 1968, IN PLAT BOOK 4, PAGE 72 IN THE OFFICE OF THE CLERK OF THE CIRCUIT COURT AT STUART, MARTIN COUNTY, FLORIDA.

CLERK OF THE CIRCUIT COURT
DOROTHY PIERCE BY *[Signature]* D.C.

FILE 130663
SHEET 3 OF 3

CERTIFICATION

I HEREBY CERTIFY THAT THE PLAT SHOWN HEREON IS A TRUE AND CORRECT REPRESENTATION OF A SURVEY MADE UNDER MY DIRECTION AND THAT SAID SURVEY IS ACCURATE TO THE BEST OF MY KNOWLEDGE AND BELIEF AND THAT PERMANENT REFERENCE MONUMENTS HAVE BEEN PLACED AS REQUIRED BY LAW.

Lee Brock
LEE BROCK—LAND SURVEYOR
FLORIDA CERTIFICATE N# 2157

SUBSCRIBED AND SWORN TO BEFORE ME THIS 15th DAY OF MAY, A.D. 1968, AT STUART, FLORIDA.

MY COMMISSION EXPIRES *November 15, 1970*
NOTARY

STAFFORD & BROCK
ENGINEERS & SURVEYORS
38 EAST OCEAN BLVD
STUART, FLORIDA